

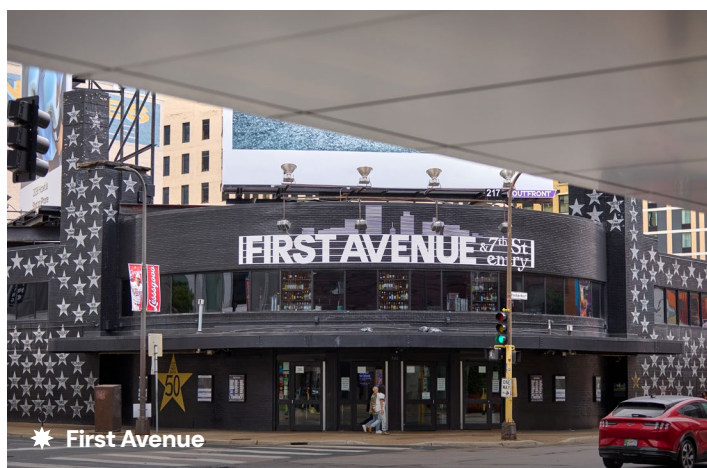
# FROM PRINCE TO THE KING

## ITINERARY

Shining the spotlight on two of the most legendary musicians in the U.S.A., this musical journey starts in Minneapolis, the birthplace of super-star Prince. The drive continues to Chicago, with its rich history of blues. Next stop is Nashville, the center of country music, and the journey ends in Memphis, home of Elvis, the King of Rock and Roll. For many, a trip through the United States is not complete without discovering the rich musical history that this country has to offer.



★ Paisley Park



★ First Avenue

### DAY ONE: MINNEAPOLIS/ST. PAUL/BLOOMINGTON

Start your day with a self-guided tour of Prince's favorite places in the Minneapolis area, including the Capri Theater, stage of his first performance as a young unknown musician, to The Electric Fetus, where Prince frequently shopped for music. Then a visit and tour of Paisley Park, Prince's home and recording studio, gives unique insights into his life and music. You'll see many of his outfits, guitars, and memorabilia. End the day with a performance at First Avenue, a nightclub made famous in his movie, *Purple Rain*—be sure to get a photo of the wall of stars who have performed here, as well as a Prince mural on a nearby building. Another great photo op in Minneapolis is of Minnesota-born musician Bob Dylan—a mural of Dylan was painted by famed Brazilian artist Eduardo Kobra.





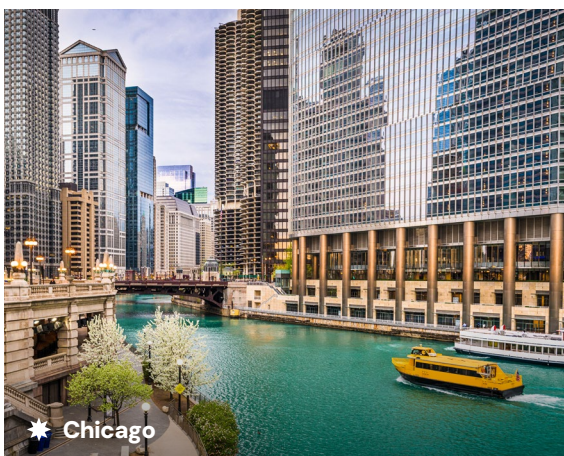
★ Mall of America

## DAY TWO: MINNEAPOLIS/ST. PAUL/BLOOMINGTON

Enjoy a narrated morning cruise on the Mississippi River, which flows through the hearts of Minneapolis and St. Paul. Then it's time to "Shop til you Drop" at Mall of America (MOA) in Bloomington, the largest shopping and entertainment complex in the U.S. With over 500 stores, 50 restaurants, indoor amusement park Nickelodeon Universe, SEA LIFE Aquarium and dozens of other attractions, MOA is amazing. And in Minnesota there's no sales tax on clothing or shoes! This evening, enjoy dinner and a live performance at the Dakota, a music club in Minneapolis that Prince frequently visited.

## DAY THREE: CHICAGO | 407 mi/651 km

Drive to Chicago today and discover the city's famous architecture, along with its vibrant relationship with the blues. After the Great Migration in the 20th century when millions of Black Americans moved north, blues musicians from the Mississippi Delta made Chicago a major hotspot for the blues. After checking into your hotel, head to Buddy Guy's Legends, a club which has been showcasing national and international acts for 25 years.



★ Chicago

## DAY FOUR: CHICAGO

No visit to Chicago is complete without an architectural tour of the city, preferably on a river cruise. From the 100-year-old Art Deco, Neo-Classical, and Gothic Towers, to some of the tallest modern-day skyscrapers, Chicago is where old meets futuristic architectural endeavors. The afternoon features a visit to Willie Dixon's Blues Heaven Foundation, which features a museum and weekly concerts. This former recording studio for Chess Records originally focused on the blues, but later expanded to soul, gospel and rock and roll. Recording artists included Chuck Berry, Muddy Waters, the Rolling Stones, and Eric Clapton. This evening, check out live performances at Blue Chicago or House of Blues.

## DAY FIVE: NASHVILLE | 471 mi/754 km

Today's drive south brings you through the rich farm country of Illinois to the rolling hills of Kentucky on the way to Nashville, Tennessee, known as "Music City" and the center of country music. In addition to music, the city offers a warm southern atmosphere, a growing culinary scene, and historical sites. After arrival, enjoy the evening at a lively honky-tonk on Broadway, one of Nashville's most famous music streets.



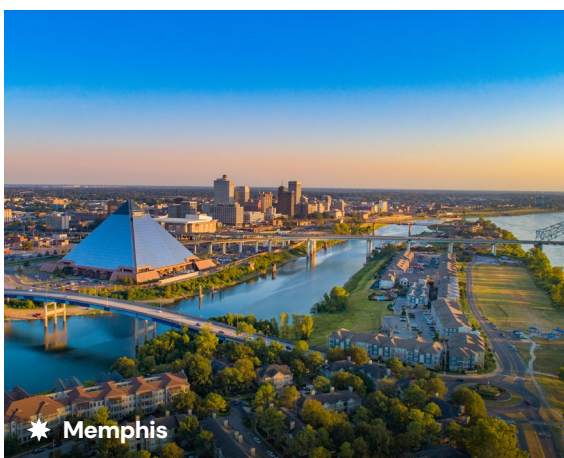
★ Nashville

## DAY SIX: NASHVILLE

Start the morning with a visit to the Country Music Hall of Fame, followed by a tour of the historic RCA Studio B. Built in 1957, RCA Studio B became known as a birthplace for the "Nashville Sound," a pop-oriented style of country music with artists including the Everly Brothers, Willie Nelson, and Dolly Parton. Finish your stay in Nashville with live music by checking out shows at Grand Ole Opry or the Ryman Auditorium.

## DAY SEVEN: MEMPHIS | 213 mi/341 km

The final city on the tour brings you to Memphis, home of The King of Rock and Roll, the one and only Elvis Presley. Visit the former home of The King at the Graceland Estate and learn about his life on a guided tour. Then visit Sun Studio to see where Elvis and other musical greats like Johnny Cash recorded some of their greatest hits. In the evening, a stroll down Beale Street reveals world-class live music venues and is best experienced with a cold beverage and barbequed delicacy in hand.



★ Memphis

## DAY EIGHT: MEMPHIS

Before departing Memphis, visit the Stax Museum of American Soul Music, which pays homage to Soul and Gospel music, and features memorabilia from musicians like Otis Redding and Isaac Hayes. Next a stop at the Memphis Listening Lab offers an immersive experience, where you can explore the city's musical legacy through exhibits and rare recordings. End the tour with a stroll along the mighty Mississippi River, a tour that started with Prince and ended with The King.



# NORWEGIAN-AMERICAN MINNESOTA HERITAGE TOUR

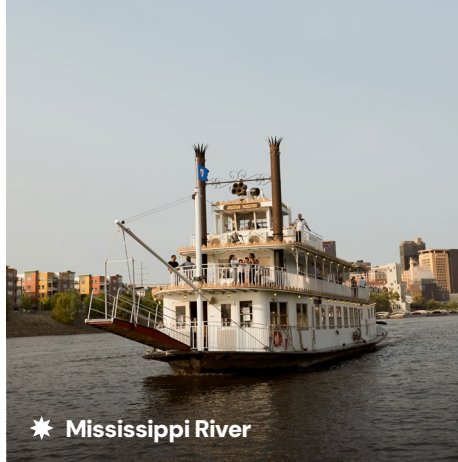
Driven to emigrate by overpopulation, unfulfilled nationalism, and a fractured economy, hundreds of thousands of Norwegians came to Minnesota between 1851 and 1920, making the Minneapolis/St. Paul area the unofficial capital of Norwegian America. Today many sites tell the story of the Norwegian immigration experience as they made their new homes in America.



★ Minneapolis



★ Mall of America



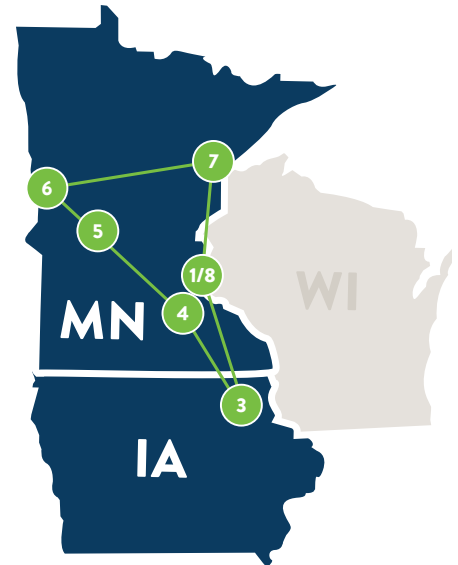
★ Mississippi River

## DAY ONE: MINNEAPOLIS/ ST. PAUL/BLOOMINGTON

Arrival at Minneapolis/Saint Paul International Airport. Check into your Bloomington hotel—most hotels have complimentary shuttles to the MSP Airport and to Mall of America. The largest shopping and entertainment center in the U.S., Mall of America has 500 stores, and attractions ranging from the Nickelodeon Universe indoor amusement park to the SEA LIFE aquarium to free concerts by musical super stars. Walk around, dine at one of the 50+ restaurants/kiosks, or shop—there's no tax on clothing or shoes in Minnesota!

## DAY TWO: MINNEAPOLIS/ST. PAUL

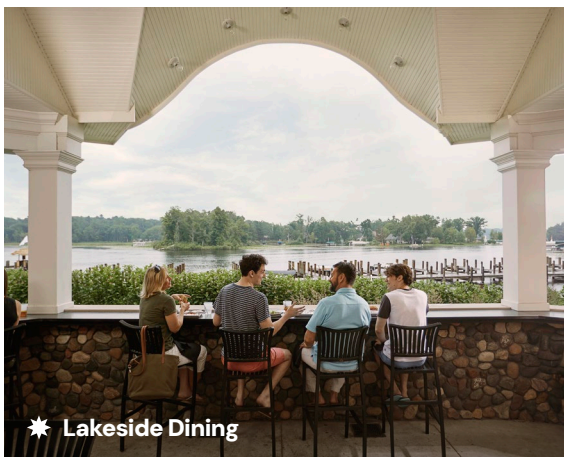
Start the day with a sightseeing tour of Minneapolis and Saint Paul, known as the Twin Cities. Tour will include stops at several Norwegian heritage sites including the Old Muskego Church at Luther Seminary, the first Norwegian church built in North America. Afternoon visit to the Mindekirken Norwegian Lutheran Church, which still holds services in Norwegian every Sunday. Then stop at the nearby Ingebretsen's Food and Gift Store, which started as a butcher shop in 1921 by a Norwegian immigrant and is still family operated. Evening dinner cruise on the Mississippi River on a paddlewheel boat.







★ Great River Road



★ Lakeside Dining



★ Hjemkomst Center



★ Canal Park

### DAY THREE: DECORAH, IOWA | 137 mi/219 km

Morning drive south along the Mississippi River passing Red Wing, Wabasha, and Winona—all named after Indian chiefs of the past centuries. Stop in Wabasha for a tour of the National Eagle Center to learn about America's national bird. Then continue the drive to Decorah, Iowa, home of the Vesterheim Norwegian-American Museum. It's the largest, most comprehensive museum in the United States dedicated to a single immigrant group. With 16 historic buildings in the main complex, Vesterheim houses over 24,000 artifacts, which include decorative folk art, as well as the tools and machinery of early agriculture, lumbering and other immigrant industries.

### DAY FOUR: NORTHFIELD | 125 mi/200 km

Returning to Minnesota, drive through Spring Grove, which was one of the most densely settled Norwegian-American colonies in the U.S. in the late 1800s. Most of these settlers came from Hallingdal, Norway and the heritage influence is visible in the Rosemaling on area shops, and even on the town's water tower! Drive on to Northfield, home of St. Olaf College, founded in 1874 to provide a college education for Norwegian immigrants and their families. Located on site, the Norwegian-American Historical Association has archives, publications and documents which maintain the history of Norwegian immigration in America.

### DAY FIVE: ALEXANDRIA | 174 mi/278 km

The drive today is to Alexandria, Minnesota, home of Big Ole the Norwegian Viking. Visit the Kensington Runestone Museum. Many people say the runestone on display proves the Vikings arrived on this continent around 1,000 A.D.—centuries before other explorers. After hearing the story, you can decide for yourself. Nearby you can also visit the historic home of Knute Nelson, a Norwegian immigrant and politician who held several offices including Governor of Minnesota. Enjoy dinner at a lakeside resort.

### DAY SIX: MOORHEAD | 106 mi/170 km

Today's journey is to Moorhead, located on the North Dakota border. First stop is at the Heritage Hjemkomst Interpretive Center which has a replica Viking ship, the Hjemkomst, on display. Built by a local man and his family, the ship sailed from Duluth, Minnesota to Bergen, Norway in 1982. Located on the grounds, the Hopperstad Stave Church was carved by a local man and is a beautiful symbol of the Norwegian heritage so prevalent in the area. Late afternoon drive just across the border to Bonanzaville in Fargo, North Dakota, to experience a historic town on the prairie, complete with 34 homes and businesses of the 19th century.

### DAY SEVEN: DULUTH | 245 mi/392 km

Morning drive through the lake and forest regions of northern Minnesota, crossing the state to arrive in Duluth, a seaport on Lake Superior and the largest inland harbor in the world. As a harbor, Duluth was an entry point for Norwegian immigrants. A display at the Depot Museum tells the story of immigrants as they landed here in the 1800s and early 1900s. After touring the Depot Museum, walk around Canal Park with shops, restaurants, and the Marine Museum, telling the story of shipping on Lake Superior.

### DAY EIGHT: MINNEAPOLIS/ST. PAUL | 248 mi/399 km

Start the day with a drive north on the North Shore Scenic Drive to view Gooseberry Falls State Park with awesome waterfalls cascading into Lake Superior. A short distance north, stop at Split Rock Lighthouse, a state historic site which was operational into the 1980s. Then drive back to the Minneapolis/St. Paul area for a final evening to enjoy dinner, live music, and a stroll along the Mississippi River.